

[Home](#) » 2023 Consultation Revised EHE Guidance

2023 Consultation Revised EHE Guidance

The consultation on new home education guidance closed on January 18th 2024. **The new guidance was never ready to be used. It is still at the draft stage.** The current guidance remains in force and can be found here <https://www.gov.uk/government/publications/elective-home-education>

The reference page for the consultation is here <https://consult.education.gov.uk/elective-home-education-team/elective-home-education-guidance-review/>

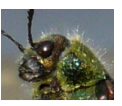
Most of the consultation questions are multiple choice (agree, disagree etc) but where there are free text boxes there is no word limit specified. (250 words in any given answer is a rough guide from another current consultation) The online form asks for the local authority but there is a final option “prefer not to disclose.”

Free text boxes for:

- The overall tone and content of both sets of guidance
- Anything that is not clear or helpful in parents’ guidance
- Inconsistencies between parents’ guidance and local authority guidance
- What is good practice for local authorities
- Comments on new advice about suitable education and proportionate level of engagement
- School attendance orders – understanding the stages of formal process
- Special needs and disabilities [SEND]
- Local authority support
- Case studies – reasons for saying why they are/are not helpful NB this is the first (and hopefully the last) time case studies appear
- Safeguarding (including but not restricted to out of school settings, unregistered schools, child employment and work experience)

My Impressions

1. The revised draft for local authorities puts things in a more logical order than in the current guidance, irrespective of any proposed changes to the content
2. There is much more investigating of “suitable education” for local authorities to do BEFORE they issue a preliminary notice to satisfy in relation to School attendance Orders – this is perhaps the biggest change
3. The proposed case studies are problematic since local authority approval hinges on having met the family previously or the family now agreeing to meet in person or to have a virtual meeting even though the draft guidance itself does not push meetings to the same extent as eg the new Welsh guidance
4. The special needs section has been changed and not necessarily for the better



- [Answer Day Write Up Friday January 12th](#)
- [Answer Day Wednesday January 10th](#)
- [The First Step](#)
- [Introduction](#)
- [Why Is The Home Education Guidance So Long](#)
- [Starting Page Consultation](#)
- [7 Consultation Questions and Suggested Pages](#)
- [Online Consultation New Guidance](#)
- [Case Study 1 New Guidance](#)
- [Case Study 2 New Guidance](#)
- [Case Study 3 New Guidance](#)
- [Suitable Education – the Law \(rewritten 5.1.24\)](#)
- [Suitable Education in New Guidance](#)
- [Suitable Education in New Guidance 2](#)
- [Will Parents Have To Prove Suitable Education?](#)
- [Informal Process in New Guidance](#)
- [Formal Process in New Guidance](#)
- [Support in New Guidance](#)
- [Data Protection in New Guidance](#)
- [Safeguarding in New Guidance](#)
- [Safeguarding in New Guidance 2](#)
- [Special Needs in New Guidance](#)
- [Special Needs in New Guidance 2](#)
- [Parents Guidance Inconsistencies](#)
- [Parents Guidance Complaints](#)

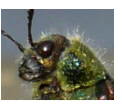
Current Guidance

Guidance

The current version of home education guidance for local authorities in England was published in April 2019. The emphasis is on ensuring LAs are fully aware of existing powers and duties. The Home Education Guidance does not introduce any new powers or duties for local authorities to monitor the suitability of home education nor any ...

[Continue reading](#)





PAGE UPDATED APRIL 11TH 2026. This page is where you can find out what is happening with the Children's Wellbeing and Schools Bill in parliament. It also includes a reference list of all my pages and posts about the Children Not In School chapter of the bill. Last minute changes were made to the bill ... [Continue reading](#)



Ed Yourself